

THE EFFECTS OF SULPHATION

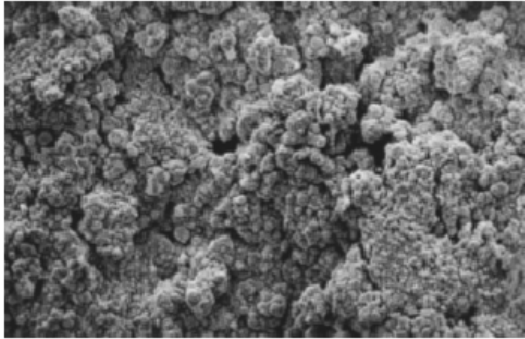


Image showing active new lead sponge plate found in a new battery. This plate works at full capacity and full efficiency as per manufacturer specification.

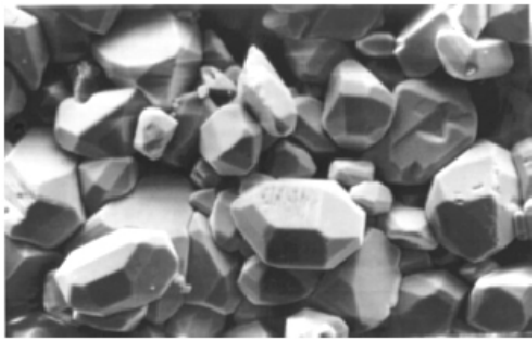


Image showing plate coated by dense, hardened, crystalline lead sulfate. There is no active lead sponge visible; this plate works at an extremely reduced capacity and efficiency.



Image showing partial recovery of the heavily sulfated battery plate following Pulsing. The size of lead sulfate crystals has decreased, and crystals are pitted as they dissolve.

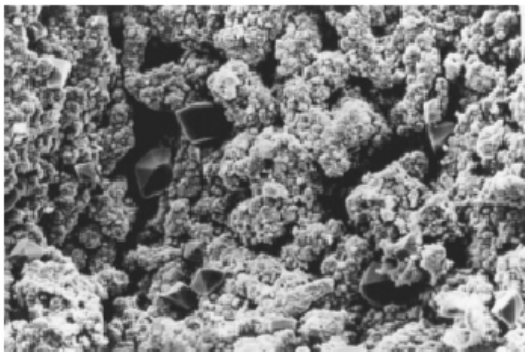


Image showing the final recovery of the plate to active sponge lead following pulsing. Once again this plate can work at full capacity and efficiency.